



Phone 8388 4141
 Mobile 0419 506 872
 Email
 dl.4645.leaders@schools.sa.edu.au

NEWSLETTER

Dear Families

I just want to say a sincere "Thank you" for the supportive and open communication families have shown through this challenging time. I am aware many emails were sent updating you on current changes/ information that the Dept of Education required your awareness, as guidelines and restrictions were made at a State and National level. Thank you for your understanding and prompt responses.

We recognise the challenges around having to make tough decisions around the safety of your family and appreciate the encouragement and patience of us as we have navigated developing flexible learning options. The staff have put in many hours in thought, planning, preparation and implementation of home learning and on-site learning programs.

Our children have remained settled, secure and safe as we have focussed our emergent play curriculum program around their wellbeing, interests and hygiene routines.

The Dept of Education has started this term with contracting an extra cleaner for an hour midday to clean inside our building and our playground equipment. Rest assured we are maintaining hygiene practices with our resources too. Your child is at the centre of all we do!

Social Distancing

To remind every one who drops off or picks up a child at kindergarten we are adding "X" marks on the ground to show 1.5m distancing in the porch area. To provide a further safety measure one way flow through the porch will be indicated by chalk arrows and an ENTRY/ EXIT sign displayed. Thank you for your co-operation.



Governing Council meeting

Our next meeting is for this Wed 13th May at 6:30pm on site, with social distancing observed. Everyone is most welcome to join us as we catch up on all that has been happening and make decisions around best possible outcomes for our children's learning.

Communication / Storypark

As a result of developing flexible learning options prior to the start of this term our private Facebook page is having more regular posts added to keep all families/ children connected.

The home learners are also being phoned everyday to ask what fruit they are eating so that we can include it onto our group chart.

Videos of teaching moments/ group activities have been posted onto Facebook and Storypark to provide further learning support for families and another means of communicating group learning ideas.

Please continue to familiarise yourself with Storypark as we will continue to use this platform to regularly post individual learning experiences / community notices on it throughout the year. As the administrator you can invite other key family members anywhere in the world to join your child's learning profile. The Storypark website has a lot of information for families and a support help option if needed.

Fees

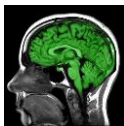
Fees were sent out last Wed, they are due by Monday 1st June. Please contact me if you require a payment plan due to financial hardship. Reminder if paying online to please key in your invoice number and your child's name. Thank you.

Allergy Aware Zone

One child at our centre has now been issued an epi-pen for a "Hopper ant" allergy. Tests are also being conducted to find out if nut allergies are a concern too. I have included our Nutrition policy in the email sent as we require Peanut butter, Nutella and commercially produced muesli bars with nuts not to be brought to Kindergarten.

The Nutrition policy also gives ideas on our focus of healthy eating options for snacks / lunches. We are noting many packaged snacks and sweet foods are regularly in lunch boxes. We call these "sometimes" foods and ask that they be only given at home please. We believe Food has a direct impact on a child's behaviour and learning, so we encourage a healthy body for a healthy mind!

Curriculum News - What we are learning



Growth mindset

The children will be introduced this term to the concept of 'Growth mindset' through a puppet play which shares a message of perseverance, taking on challenges, keep practising and not giving up. You need a 'green brain' to do this and this is a visual clue for the children. It is also important that they understand that it's okay to make mistakes as this leads to learning.

Each day a '**Lead Learner**' is chosen to organise routines e.g. calling out children's names to go and wash their hands, setting up for lunch, making decisions about how the day runs etc. This supports children to have confidence in their abilities, care for others and the environment and learn new skills.

Safety

Each term we practice our invacuation and evacuation procedures. We explain clearly to the children that this is a 'pretend' emergency', the need to respond quickly to the signal and listen to the roll call etc. They did a great job in Term 1 with our first practise runs. Staff reflect on the these and make any policy changes and adjustments as a result.

Personna doll bags

This term we are introducing Personna Doll bags for the children to borrow and take home for a week. There are three bags - two reflect different cultures and one a pet. In each bag there is a related story and puzzle. The children have the responsibility to look after the dolls and introduce them to their family life. There is a scrapbook in the bag for children to share with us what happened during their doll's stay at their house. You (or older siblings) can write some details, draw pictures or paste in photos.



Volunteers Week

Next week is National Volunteer Week and I would like to thank all parents and community members that volunteer their time to help us, including the Governing Council. The educators appreciate their level of commitment and support as it helps us to focus on working with the children. Let's not forget to thank our fabulous volunteers!



Reminders

- **PLEASE REMEMBER A WATER BOTTLE FOR YOUR CHILD EACH DAY.** Drinking throughout the day is essential to children's physical health but also it is great 'brain juice'. If children don't have a water bottle sometimes they forget to tell us and they don't get to drink until lunch time.
- **Hats** are still to be kept in your child's bag. The Sunsmart Policy states that even in Term 2 and 3 if the UV rating is 3 or above children are required to wear a broad rimmed hat for safety.
- **Rubber boots** can be brought to kindergarten and left in lockers for wet weather play, but it is best for children to wear more secure footwear to kindergarten especially for climbing.